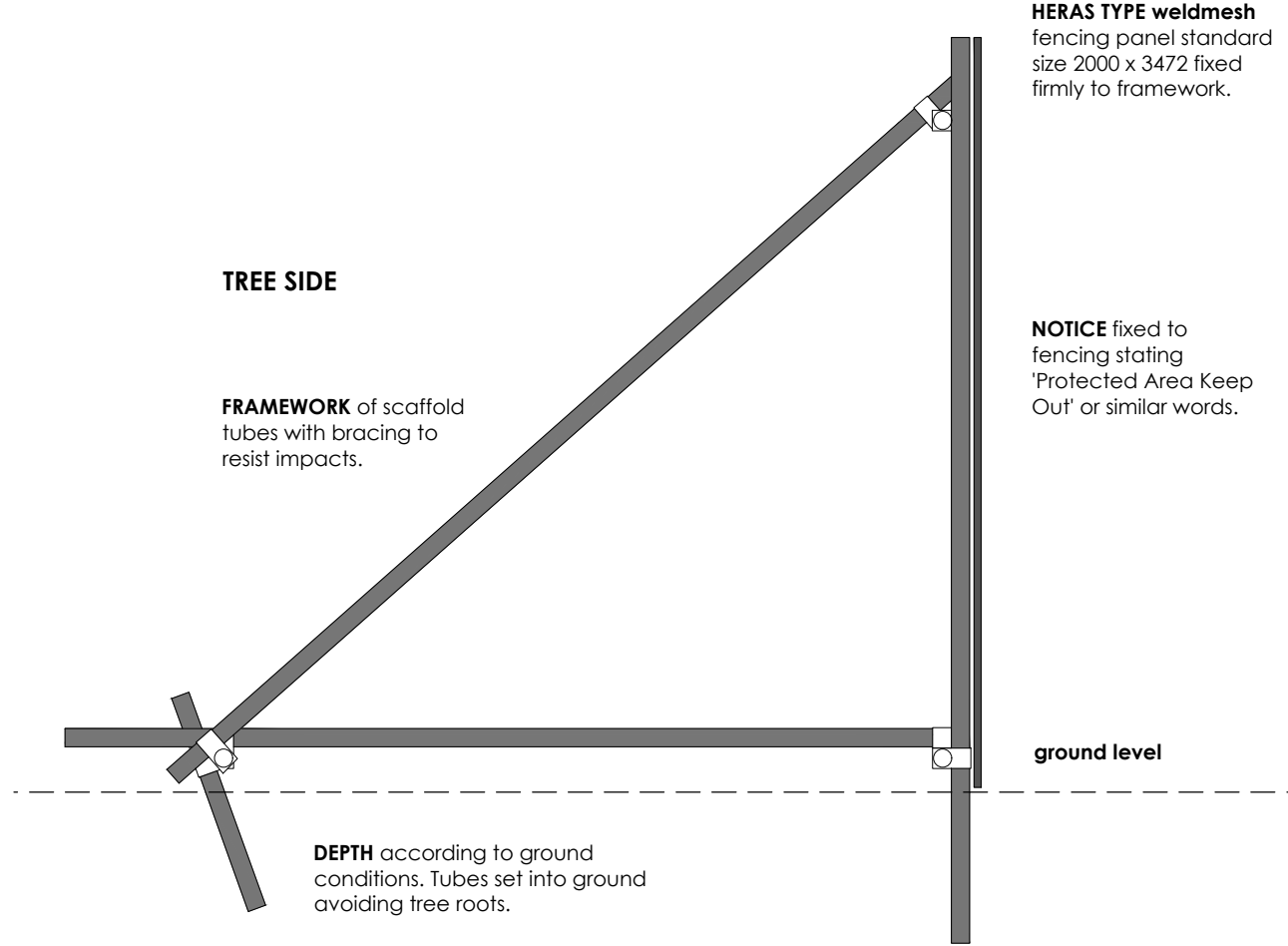
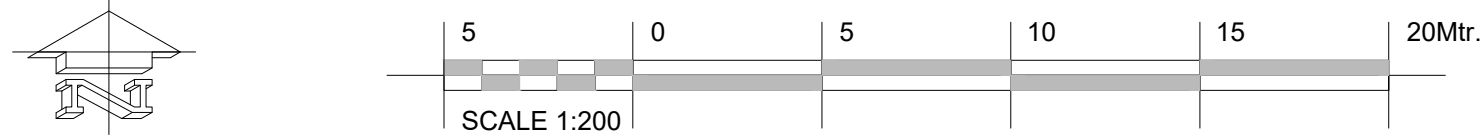


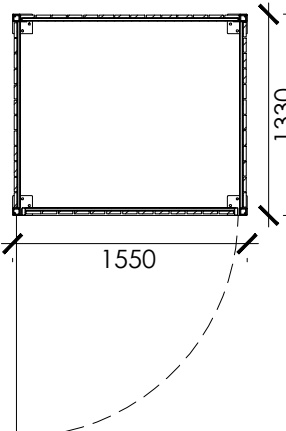
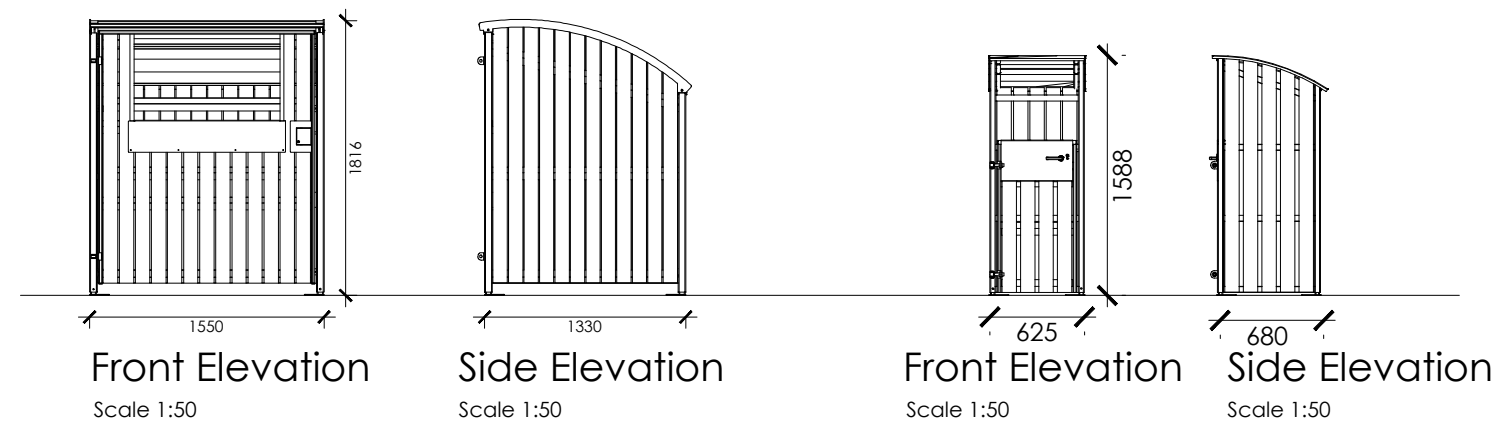


Proposed Tree Plan
1:200

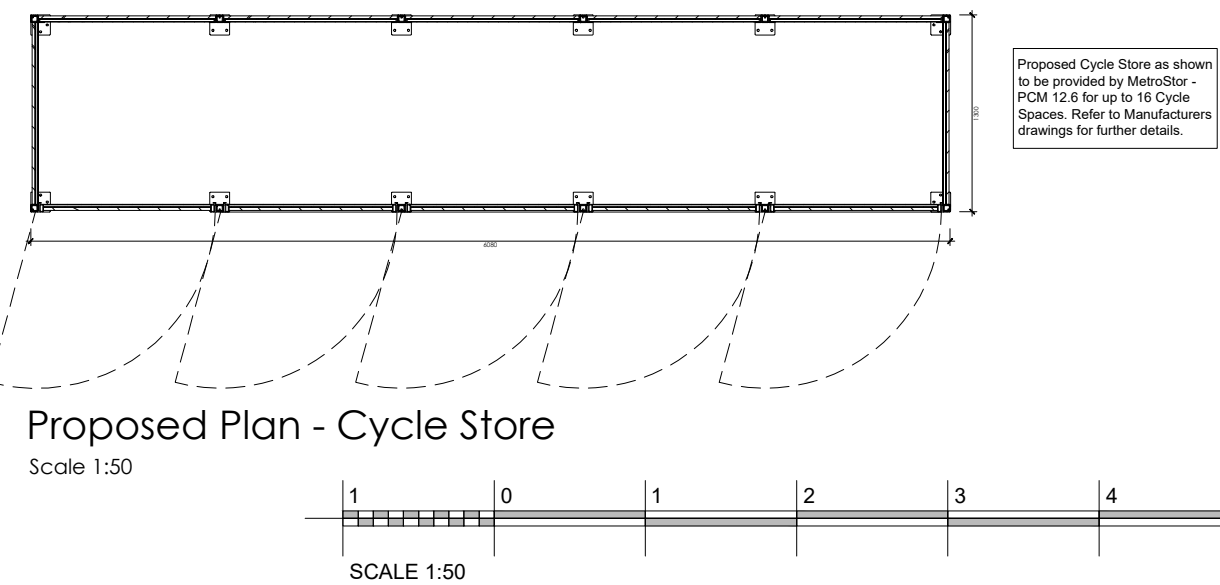
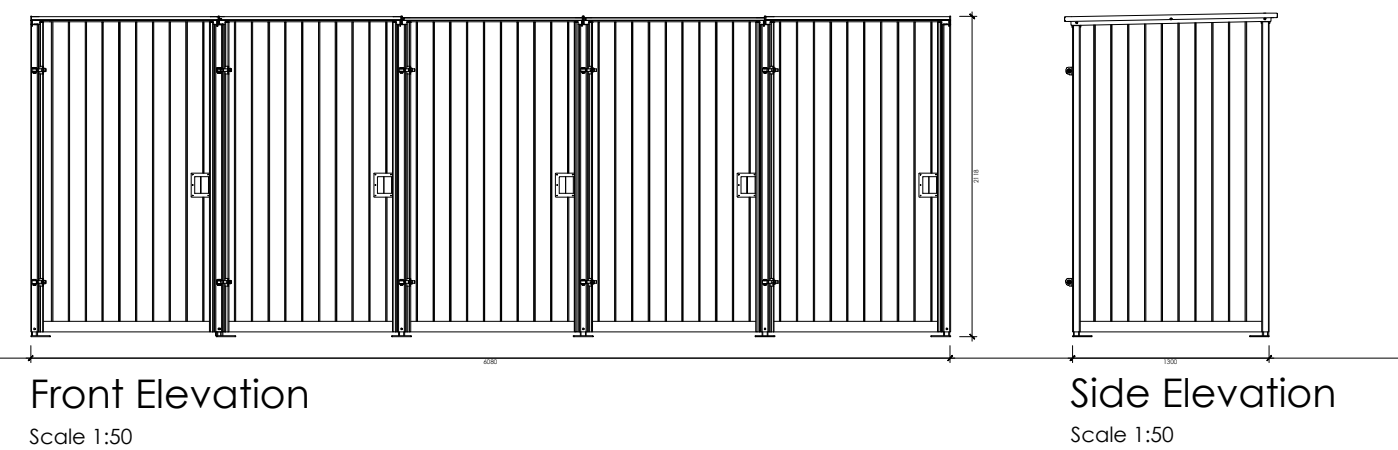


Tree Protection Fencing - Typical Detail
1:20

- NOTES:
- For location refer to drawing number.
 - All fencing to be maintained in good condition for the period of the works.
 - Within the fenced area:
 - NO spoil, vehicles, temporary buildings or ancillary equipment is to be stored.
 - Ground levels shall not be raised or lowered.
 - No services shall be laid out.
 - Use of materials likely to be injurious to trees, such as cement, bitumen, oils, or others shall not be permitted outside the fence where contaminated fluids could come into contact with tree roots.
- MATERIALS:
Standard steel / aluminium scaffold tube 48.3mm diameter, various lengths.



Proposed Plan - 140L Food Waste Store
Scale 1:50



Proposed Plan - Cycle Store
Scale 1:50

Tree schedule (BS5837)
Eagle Way

Tree ID	No.	Species	Tree's	Tree Protection
Tree T1	1	Fraxinus ornus (Manna Ash)	Retained.	
Tree T2	1	Acer sp. (Maple sp.)	Retained.	Protection Fencing
Tree T3	1	Ilex aquifolium (Holly)	To be removed.	
Tree T4	1	Ilex aquifolium (Holly)	To be removed.	
Tree T5	1	Sorbus aucuparia (Rowan/Mountain Ash)	To be removed.	
Tree T6	1	Aesculus hippocastanum (Horse Chestnut)	To be removed.	
Tree T7	1	Fraxinus excelsior (Ash)	To be removed.	
Tree T8	1	Acer sp. (Maple sp.)	Retained.	Protection Fencing
Tree T9	1	Fraxinus excelsior (Ash)	Retained.	
Tree T10	1	Acer sp. (Maple sp.)	Retained.	Protection Fencing
Tree T11	1	Acer sp. (Maple sp.)	To be removed.	
Tree T12	1	Acer sp. (Maple sp.)	Retained.	
Tree T13	1	Sorbus aucuparia (Rowan/Mountain Ash)	Retained.	
Tree T14	1	Aesculus hippocastanum (Horse Chestnut)	Retained.	
Tree T15	1	Sorbus aucuparia (Rowan/Mountain Ash)	Retained.	
Tree T16	1	Acer sp. (Maple sp.)	Retained.	
Tree T17	1	Tilia sp. (Lime sp.)	Retained.	
Tree T18	1	Tilia sp. (Lime sp.)	Retained.	
Tree T19	1	Tilia sp. (Lime sp.)	Retained.	
Tree T20	1	Tilia sp. (Lime sp.)	Retained.	
Tree T21	1	Acer sp. (Maple sp.)	Retained.	
Tree T22	1	Sorbus aria (Whitebeam)	Retained.	
Tree T23	1	Tilia sp. (Lime sp.)	Retained.	
Tree T24	1	Tilia sp. (Lime sp.)	Retained.	
Tree T25	1	Crataegus sp. (Hawthorn sp.)	Retained.	
Tree T26	1	Acer sp. (Maple sp.)	Retained.	
Tree T27	1	Tilia sp. (Lime sp.)	Retained.	
Tree T28	1	Tilia sp. (Lime sp.)	Retained.	

PLANNING ISSUE

PL4	11.03.21	Protective fencing added to T10. Notes corrected for Trees Schedule as T9 is to be retained. Cycle store updated to allow for up to 16 cycle spaces.	DBL	DBL
PL3	09.03.21	Trees added to north elevation and additional shrub planting shown.	DBL	DBL
PL2	04.03.21	Bin and cycle store elevations added. Tree protection fence shown.	DBL	DBL
PL1	26.02.21	PLANNING ISSUE	TJM	DBL
REV	DATE	DESCRIPTION	BY	APPD

CLIENT

southend onsea
BOROUGH COUNCIL

PROJECT
EAGLE WAY (SITE 1B)
SHOEBURNESS

DRAWING TITLE
PROPOSED TREE PLAN
BIN & CYCLE STORE ELEVATIONS

DATE	SEPT 2020	DWG. No.	4760.118	REV.	PL4
SCALE	1:100, 1:1250@A1				
DRAWN BY:	DBL	DATED	-		
CHECKED BY:	DBL	DATED	-		

AK DESIGN PARTNERSHIP LLP
CHARTERED BUILDING CONSULTANCY
BUILDING SURVEYORS
BUILDING DESIGNERS
PROJECT MANAGERS

CEME INNOVATION CENTRE
CEME CAMPUS
MARSH WAY
RAINHAM
RM13 8EU

TEL: 020 8596 7070
E-MAIL: office@akdesign.co.uk
WEB SITE: www.akdesign.co.uk